

# **ARLENTUS** **CONTROL**



INDUSTRIAL  
**CONTROL**  
SYSTEMS

**PEBBLE & STONE**  
PRODUCT CATALOG



## A' Design Award Winner in Engineering and Technical Design Category, 2013 - 2014

Radio Remote Control Unit: "rock.RBST" is radio remote control transmitter unit for robust radio remote control of safety-critical industrial and mobile applications and includes everything from simple standard systems to advanced customized systems. The "rock.RBST" offers various transmitter models.

The waist transmitter comes in different versions, one is a simpler version, which handles some movements at different speeds and contains minimum function.

The other is a more sophisticated version, which handles more movements at different speeds and offers many extra functions.



# Contents

---

02-13

## **Arlentus Control**

*Who Are We?*

*Why Arlentus Control ?*

*Customizable Solutions*

*Trust and Freedom*

*in the Workplace*

*Our Certificates*

*Project Process*

*Sectors & Configurations*

14-19

## **Pebble**

*Specifications & Options*

*Technical Specifications*

20-25

## **Stone**

*Specifications & Options*

*Technical Specifications*

26-35

## **Pebble&Stone**

**Spare Part List**



# We Combine Control with **Innovation**

---

Arlentus Control has carried out many projects within the scope of Industry and University cooperation since its establishment. It operates in industrial areas where wireless communication systems, electronic, mechanical and industrial design, prototype production, industrial control, unmanned control, monitoring, and reporting systems are used.

With its quality and innovative approach to product and production processes, it has a high standard of service understanding by aiming to reduce production costs and increase efficiency.

A product of its innovative approach and R&D works, Radio Frequency Control Systems has unique designs registered all over the world.

Among these designs, the "Rock" model won the design award in the "Engineering and Technical Design Category" 2013-2014 in Italy.

Arlentus Control combines control with innovation with its production, innovation, and technology approach in addition to its perspective on R&D.



# Right Control in Industrial Applications

---

PEBBLE and STONE is the first and most comprehensive joystick controller series in Arlentus Control product family. It is designed for efficiency in harsh industrial environments. Its customizable panel, supporting screen and LED feedback, ergonomic design, and robustness are what make it a matter of choice. Drop-proof and impact-proof thanks to its polyamide and fiberglass-reinforced enclosure, STONE is built to the IP65 standards.

PEBBLE and STONE provide maximum efficiency throughout their long service life. It is resistant to dusty, humid, oily, hot, cold, etc. constantly varying environments. Thanks to its modular structure, it offers affordable solutions to the damages and malfunctions in the shortest time. Its configurable structure provides users with a flexible and safe operational experience.

## Customizable Operator Panel



Pebble and Stone RF control system has a flexible panel design offering operators a comfortable and safe operation. This enables solutions that are customized to industry and operation cases.

## Modular Design



With the modularity of the Pebble and Stone RF control system, you will only need to change the module. The result is a fast solution with lower technical.

## Two-Way and Seamless



Thanks to two-way and seamless communication, Pebble and Stone RF control system minimizes potential errors in the system control, enabling more reliable control outcomes.

## High-Performance Battery



10200 Ma li-ion battery supplied with Pebble and Stone RF Control System provides the advantages of a prolonged and seamless.





# Who Are We?

---

Arlentus Control is an engineering company that develops and manufactures products to high-quality standards through its dynamic and young staff in order to provide industry solutions and innovation in RF control systems. Arlentus Control constantly carries out R&D works to meet emerging industrial needs.

It engages in electronic, mechanical and embedded system software and design, monitoring and reporting systems, tailor-made project and manufacturing activities as well as production and consultancy activities for industry and defense.



## INDUSTRIAL **RADIO CONTROL** SYSTEMS



**"Arlentus Control transforms quality and standard into efficiency by combining them with innovative engineering solutions."**

Arlentus Control produces RF communication systems with original and award-winning designs. They are used in many fields such as cranes, onboard equipment, railway vehicles, transportation-lifting equipment, and in-factory wireless data transfer.

As Arlentus Control, our basic principle is to improve our long-standing experience with radio control systems and to combine it with our innovative approach towards design. Our products are designed to provide efficient solutions for all needs, from the simplest applications to the most complex systems.

**"It uses durable polyamide raw material in its products manufactured in accordance with IP standards and without compromising quality."**

In line with the identified needs, it becomes a solution partner in many areas with innovative product and production processes, increasing quality, standard and efficiency, reducing production costs, and engineering services.

Its operations are centered on customer satisfaction, improving and adding value to every project where it is a solution partner.

## Unique Solutions in Different Industries

In addition to standard applications, it produces solutions with an engineering team with software and design capability that meet special demands. It provides production, adaptation and field application services of radio control systems used in machinery, construction, mining, logistics, agriculture, onboard equipment, industrial transportation, and lifting industries.

**"Capability of integrating R&D activities with production stages give Arlentus Control the power, and solutions partners the confidence."**





# Why Arlentus Control?

While Arlentus Control produces Industrial Radio Control Systems that best accommodates the needs of its users with its know-how and experience, it prioritizes customer satisfaction through its special software, design, and after-sales services. Arlentus Control continually develops its products thanks to the feedback from all users collected during after-sales service. In addition to all these, its fast service process and experienced technical support team further enhances our brand value.

Arlentus Control produces maximum efficiency systems that are resistant to harsh working environments in order to provide users with long-lasting solutions.

It provides users fast and easy integration thanks to customizable design and software in its systems. The safety mechanisms it contains maximizes the safety of the users in a work site.

It adopts the policy of creating solutions with the lowest cost in the shortest time thanks to its modular structure as well as its fast-responsive after-sales services in case of potential malfunctions, replacement and integration needs.

*Arlentus Control develops innovative systems that provide added value with its solution partners.*

## Customizable Solutions

Arlentus Control has the capacity and skills to produce customizable software and designs that meets the needs that cannot be met by standard solutions. Meeting these needs facilitate the production and operation process of its solution partners, contributing to the improvement of their systems. Thanks to this, it plays an active role in developing innovative systems with added value together with its solution partners.





# Safety and Flexibility in Work Sites

Today, the rapidly growing industry and complexity in the work processes causes an increase in the frequency of work accidents. Arlentus Control systems contribute to the minimization of accidents thanks to the "Safe-Distance Control" feature it contains.



## Our ISO 9001, ISO 14001 and ISO 45001 Certificates

Arlentus Control has ISO 9001 Quality Management System, ISO 14001 Environmental Management System And ISO 45001 Occupational Health and Safety System Certificates. It carries out supply, production, sales and after-sales activities within the scope of approved standards.





# Project Process at Arlentus Control

**1**

## Introduction

Arlentus Control Technical Sales Team gets familiar with the products and operations of solution partners. All details are exchanged, which will be needed to add value to, customize and make difference in the project we involved as a solution partner.

**3**

## Solution

After the survey process, design and software works are carried out with our R&D team and communicated to our solution partners in order to manage the project process successfully. The subjects that need revision as per the feedback are clarified. A mutual agreement is reached on the final solution.

**5**

## Application

After delivery of the products which completed the release process, integration of the products in the work site is carried out optimally in cooperation with the technical teams of our solution partners.



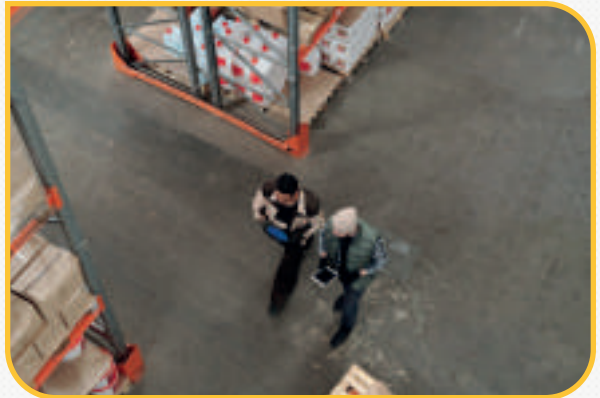
# A solution-oriented, multi-condition-accommodating and efficient process plan

## Survey



2

Through an on-site survey, comprehensive information are collected about the products and demands of our solution partners. In light of this information, the right products and solutions that will meet needs are identified.



## Production



4

Production starts for the mutually-agreed solution. Production completes for the mutually-agreed functions and specifications. After rigorous testing and quality processes, delivery is made according to the mutually-agreed lead time.



## Aftersales



6

After integration of our solutions, we continuously provide aftersales services via our technical support premises or on-site, depending on the requirement.



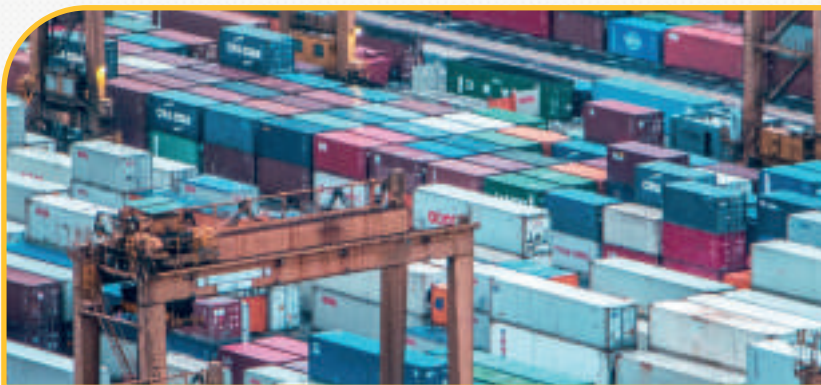


# Industries and Configurations



Pebble and Stone radio frequency controllers provide operator safety and flexibility of movement in the operation of mobile equipment and systems. The most important advantage of using a radio frequency controller is the ability of operator to control the equipment at a safe distance and away from the dangerous areas. Radio frequency controllers enable danger-away, safe, efficient and efficient operation of the lifting and handling equipment, mobile equipment, agro and forest equipment, heavy-duty equipment, mining equipment, and notably industrial cranes. Giving operator flexibility of movement, Pebble radio frequency has flexible and functional features that can be used in many areas thanks to its ergonomic structure.

## Industrial Cranes and Lifting Equipment Technology



- Tower Cranes
- Stationary Cranes
- Gantry Cranes
- Overhead Travelling
- Cranes

Industrial Cranes and Lifting Equipment Technology Arlentus Control provides maximum performance, comfort and safety for standard cranes to lifting equipment, from tower cranes to single or multi-crane systems thanks to its long-standing experience and equipment.





## Mobile Vehicle Technology



- Trailer
- Forklift
- Mobile Cranes
- Rescue Vehicles
- Skip Loaders
- Street Cleaning and Care Vehicles
- Platform Vehicles
- Container Lifting Vehicles
- Fire Brigade Equipment

Pebble radio frequency control system provides unique performance, comfort and operator safety to the mobile industry from lifting equipment to fire equipment to street cleaning vehicles thanks to its long-standing experience.



## Port and Ship Technologies



- Deck Cranes
- Slewing Cargo Cranes
- Towboats
- Ship Water Sprayers
- Container Handling Cranes
- Lattice Boom Mobile Cranes

Pebble radio frequency control system provides high-level safety software and hardware solutions that are resistant to the site conditions for handling cranes to mobile port cranes, deck cranes to sprayers.





## Machinery Technology



- Welding Machines
- Conveyor Systems
- Handling Equipment
- Pipe Cutting Machines
- Cable Production,  
Sheet-Forming Lines

Pebble radio frequency control system offers unique solutions with the high level of safety to any kind of machinery to be controlled remotely from in-factory logistics to handling vehicles.



## Agricultural and Forestry Technology



- Harvesters
- Feed Mixers
- Tree Shakers
- Fruit Picking Platforms
- Tree Diggers, Cutters, Handlers

Pebble radio frequency system provide maximum efficiency with the operator safety from agro-equipment to forest equipment.





## Heavy-Duty Machines



- Excavators
- Asphalt Pavers
- Wheel and Pallet Loaders
- Stone Crushers and Screeners
- Tracklayer, Maintenance and Repair Equipment
- Concrete Pumps, Dispensers

Pebble radio frequency control system offers robust and long-lasting solutions to hazardous and challenging work sites by prioritizing the health and safety of operator.



## Mining Technology



- Drilling Rigs
- Underground Mining Machines
- Horizontal-Vertical Drillers
- Stationary and Mobile Stone Crushers and Screeners

Pebble radio frequency control system offers wireless long-range remote control solutions for the control of the equipment used in the hard-to-reach areas from underground and surface mine sites to the crushing and screening plants.





# PEBBLE

---

A functional controller of Arlentus Control family, Pebble is built to withstand all challenging conditions that can be found on the site. Standing out with its fiberglass-reinforced polyamide enclosure as well as the software and safety features it contains, Pebble is focused on the maximum efficiency on the site.

## Features & Options



### High Impact-Resistant Exterior Body

Industry-grade high-performance, high-impact resistant external body. High UV-light resistance.



### IP65 Protection Class

Suitable for liquid and dusty environments thanks to its protection class.



### Frequency Setting

Pebble radio frequency control system can be set Up to 20 different frequencies. Easy frequency switching for redundancy, enables a seamless operation of the systems operated using multi-controllers.



### Device ID

64 different ID (encryption) as a security measure against intrusion into the device connections. Interference-proof for interference from different wireless systems, which prevents potential work accidents.



### Encryption

Pebble radio frequency control system has 32-bit encryption communication infrastructure. This maximizes communication security.



### Menu Settings

With the panel on the receiver of pebble radio frequency control system, it is easy to adjust many parameters such as a ramp, speed, voltage, current, etc. in the menu.





## Customized Software

Offers software solutions that meets the needs of the system controls in different industries. Also, it is possible to apply safety scenarios special to the operator and system.

## Receiver Configuration

It offers opportunity to control many parametric values such as a ramp, speed, and current of the machine/equipment.

## Receiver Feedback Screen

Ability to adjust system input and output configuration settings on the screen. Error Codes Saved in QR offers a fast response to a malfunction.

## Extendible Range

Offers system safe and comfortable control opportunity to the applications needing long-range control.

## Wired Operation

In the situations where radio frequency controller cannot be used, it offers the opportunity to operate the equipment via wire communication.

## Customizable Operator Panel

Pebble radio frequency control system has a flexible panel design offering operators a comfortable and safe operation. This enables solutions that are customized to industry and operation cases.

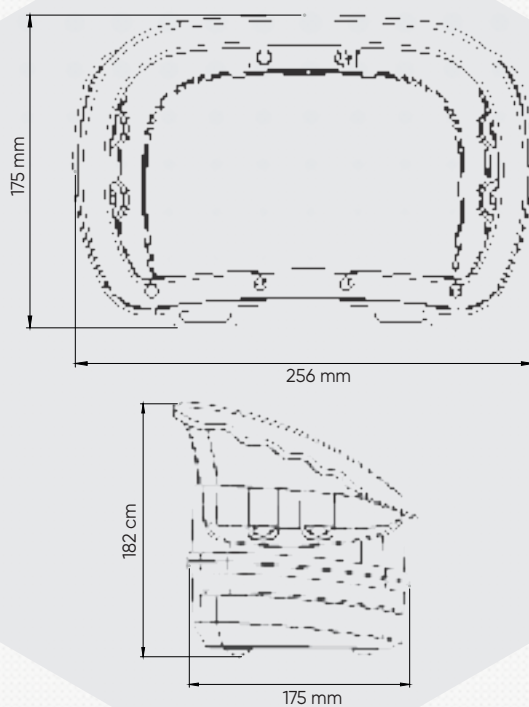


# TRANSMITTER

## Technical Specifications

Operating Frequency	863–870 Mhz
Modulation Type	FSK, GFSK
Data Rate	35–50 kbps
Radio Communications	One or two-way radio communication protocol, adjustable manual channel scanning
Signal Output Power	868 Mhz > 14 Dbm
Dimension	256x175x182 mm
Weight	–1,3 Kg (weight may vary depending on the configuration)
Protection Class	IP 65
Type of Material Used	Fiberglass-reinforced polyamide
Receiver Status Indicator	Yes
EEPROM	Yes
Antenna	Internal/External
Battery	3.7 VDC 10200mA Li-ion
Battery Warning System	Yes
Number of Function	Configurable
Operation Distance	200–800 Meter
Operating Time	~80 Hours
Operating Temperature	–20 °C to 70 °C
Storage Temperature	–40 °C to 85 °C







# RECEIVER

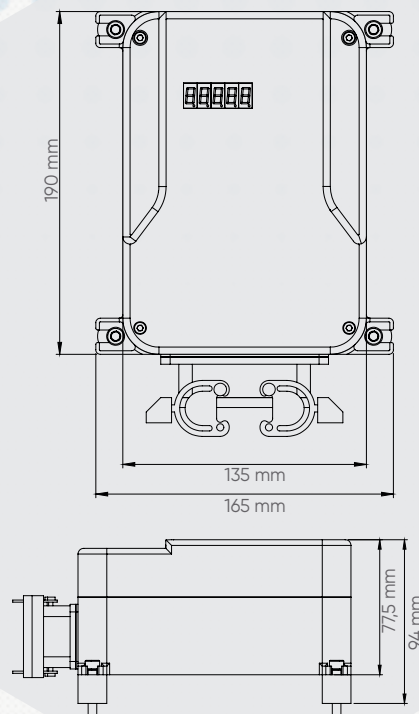
## Technical Specifications

Operating Frequency	863-870 Mhz
Modulation Type	FSK, GFSK
Data Rate	35-50 kbps
Radio Communications	One or two-way radio communication protocol, adjustable manual channel scanning
Operating Voltage	10-30 VDC
Current	Max 1A
Dimension	165x190x94 mm
Protection Class	IP 65
Emergency Indicator	Yes
Connection	Union, Multi-contact industrial connector
Communication	Radio Frequency
Screen Type	LCD Screen
Antenna	Internal/External
Type of Material Used	Fiberglass-reinforced polyamide
Operating Temperature	-20°C to 70°C
Storage Temperature	-40°C to 85°C

### Analog/Digital Input and Output

Digital Output	Max 20 unit
Digital Input	24 VDC - Max 4 units.
Analog Output	0-10 VDC - Max 10 units PWM - Max 10 units
Analog Input	0-10 VDC - Max 4 units







# STONE

---

The most experienced member of Arlentus Control family, Stone is built to withstand all challenging conditions that can be found on a work site. Standing out with its fiberglass-reinforced polyamide enclosure as well as the software and safety features it contains, Stone is focused on the maximum efficiency in the site. Stone is available in various configurations with or without the screen.

## Features & Options



### High Impact-Resistant Exterior Body

Industry-grade high-performance, high-impact resistant external body. High UV-light resistance.



### IP65 Protection Class

Suitable for liquid and dusty environments thanks to its protection class.



### Frequency Setting

Pebble radio frequency control system can be set Up to 20 different frequencies. Easy frequency switching for redundancy, enables a seamless operation of the systems operated using multi-controllers.



### Device ID

64 different ID (encryption) as a security measure against intrusion into the device connections. Interference-proof for interference from different wireless systems, which prevents potential work accidents.



### Encryption

Pebble radio frequency control system has 32-bit encryption communication infrastructure. This maximizes communication security.



### Menu Settings

With Stone radio frequency control system, it is easy to adjust many parameters such as ramp, speed, voltage, current, etc. in the menu.





### Customized Software

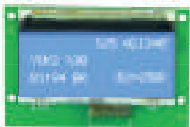
Offers software solutions that meets the needs of the system controls in different industries. Also, it is possible to apply safety scenarios special to the operator and system.

### Wireless Video Transfer



It enhances the safety level of the systems thanks to the wireless video transfer in the applications which involve dangers for operator safety.

### LCD Screen



Stone radio frequency controller enable analog and digital information of the system to be sent to the operator. This ensures operator control the systems safer.

### Extendible Range



Offers system safe and comfortable control opportunity to the applications needing long-range control.

### Wired Operation



In the situations where radio frequency controller cannot be used, it offers the opportunity to operate the equipment via wire communication.

### Customizable Operator Panel



Stone radio frequency control system has a flexible panel design offering operators a comfortable and safe operation. This enables solutions that are customized to industry and operation case.

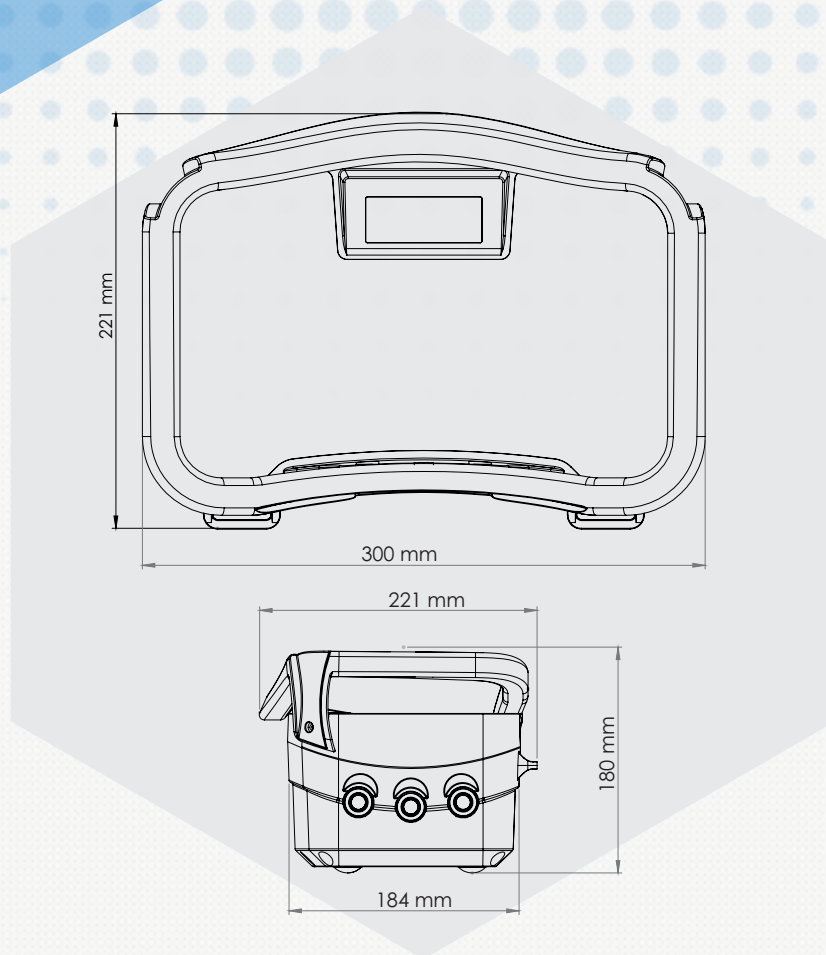


# TRANSMITTER

## Technical Specifications

Operating Frequency	863–870 Mhz
Modulation Type	FSK, GFSK
Data Rate	35–50 kbps
Radio Communications	One or two-way radio communication protocol, adjustable manual channel scanning
Signal Output Power	868 Mhz > 14 Dbm
Dimension	300x221x180 mm
Weight	–1,5 Kg (weight may vary depending on the configuration)
Protection Class	IP 65
Type of Material Used	Fiberglass-reinforced polyamide
Receiver Status Indicator	Yes
Recommended Receiver Unit	FLINT
Antenna	Internal/External
Battery	3.7 VDC 10200mA Li-ion
Battery Warning System	Yes
Screen Type	LCD Screen
Number of Function	Configurable
Operation Distance	200–800 Meter
Operating Time	~80 Hours
Operating Temperature	–20 °C to 70 °C
Storage Temperature	–40 °C to 85 °C







# RECEIVER

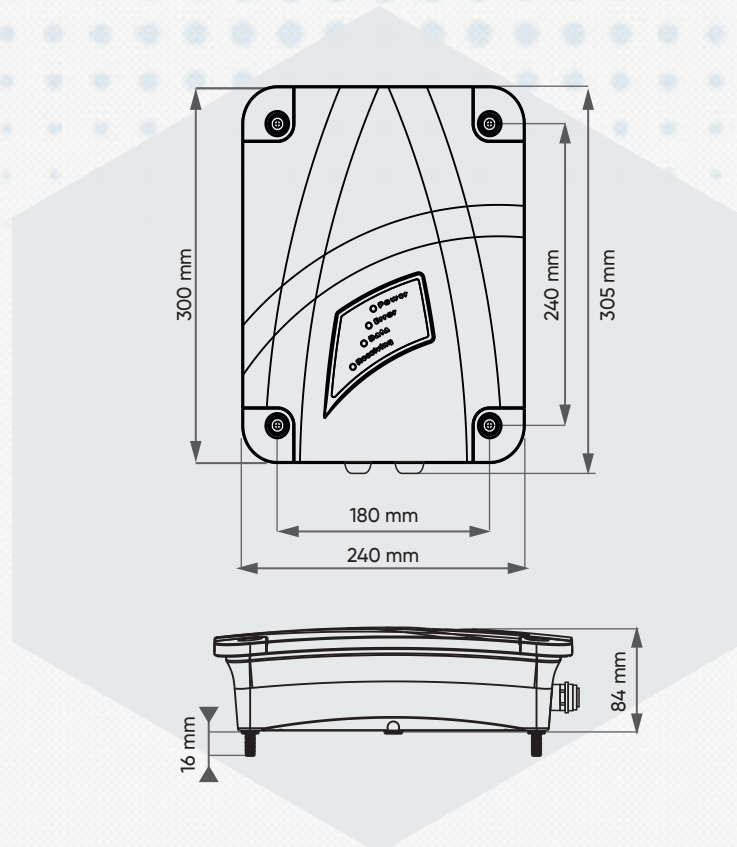
## Technical Specifications

Operating Frequency	863-870 Mhz
Modulation Type	FSK, GFSK
Data Rate	35-50 kbps
Radio Communications	One or two-way radio communication protocol, adjustable manual channel scanning
Operating Voltage	10-30 VDC
Current	Max 1A
Dimension	300x240x84 mm
Protection Class	IP 65
Emergency Indicator	Yes
Recommended Transmitter Unit	Stone
Connection	Union, Multi-contact industrial connector
Antenna	Internal - External
Type of Material Used	Fiberglass-reinforced polyamide
Operating Temperature	-20°C to 70°C
Storage Temperature	-40°C to 85°C

### Analog/Digital Input and Output

Digital Output	Max. 48 units
Digital Input	10-30VDC- Max 48 units 0-10VDC- Max 48 units
Analog Output	4-20 mA - Max 24 units PWM - Max 24 units
Analog Input	0-10 VDC - Max 48 units 4-20 mA - Max 24 units







# PEBBLE

## Transmitter Spare Part List



Electronic Parts



Injection Parts



Labeling



Other Spare Parts

### Motherboard



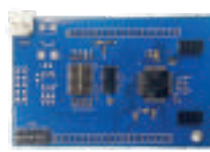
**Product Name** PBMBDZG01  
201800-0001

### Receiver/Transmitter RF Module



**Product Name** PBIODZG01  
201800-0002

### Processor Module /Wireless



**Product Name** FLMCUDZG01  
991800-0006

### Processor Module /Wired



**Product Name** FLMCUDZG02  
991800-0009

### Upper Body



**Product Name** PBENUGBL01  
201500-0001

### Lower Body



**Product Name** PBENAG01  
201500-0002

### Handle



**Product Name** PBENCN01  
201500-0003

### Screen Gasket



**Product Name** PBLKS01  
201500-0004

### Resopal Panel



**Product Name** PBPNLRP01  
201700-0008

### Resopal Panel



**Product Name** PBPNLRP01  
201700-0010



# PEBBLE

## Transmitter Spare Part List

Motherboard



Product Name PBRMB01  
201800-0014

Receiver/Transmitter  
RF Module



Product Name STRFMDZG01  
991800-0007

Processor Standard  
Module



Product Name FLMCUDZG01  
991800-0006

Processor Communication  
Module



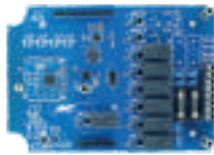
Product Name FLMCUDZG02  
991800-0009

PWM Module



Product Name PBPWM01  
201800-0003

PWM + Digital Input  
Module



Product Name PBPWM02  
201800-0004

PWM + Relay Module



Product Name PBPWM03  
201800-0005

PWM + Relay + Digital  
Module



Product Name PBPWM04  
201800-0006

Voltage Module



Product Name 201800-0007

Voltage + Digital Input  
Module



Product Name PBVM02  
201800-0008

Voltage + Relay Module



Product Name PBVM03  
201800-0009

Voltage + Relay + Digital  
Module



Product Name PBVM04  
201800-0010

Relay Module



Product Name PBRM01  
201800-0010

Relay + Digital Input  
Module



Product Name PBRM02  
201800-0011

Digital Input Module



Product Name PBDI01  
201800-0013

Images are representative.



# STONE

## Transmitter Spare Part List

**Motherboard**


**Product Name** STMBDZG01  
101800-0002

**Receiver/Transmitter RF Module**


**Product Name** STRFMDZG01  
991800-0007

**Processor Module /Wireless**

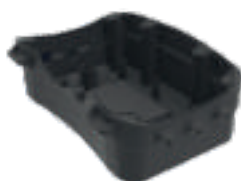

**Product Name** FLMCUDZG01  
991800-0006

**Processor Module/Wired**


**Product Name** FLMCUDZG02  
991800-0009

**Upper Body**


**Product Name** STENUGBL01  
101500-0001

**Lower Body**


**Product Name** STENAG01  
101500-0006

**Handle**


**Product Name** STENKL01  
101500-0007

**Screen Glass**


**Product Name** STENCAM01  
101500-0008

**Resopal Panel**


**Product Name** STPNLRZP01  
101700-0008

**Arilentus Logo Sticker**


**Product Name** STNLS01  
101700-0009

**Special Logo Sticker**


**Product Name** STNLS02  
101700-0011

**Lower Body Lable**


**Product Name** STNLKS01  
101700-0010

**Screen Plate**


**Product Name** STENPLK01  
101700-0006

**LCD Screen**


**Product Name** STDS1286401  
101800-0001

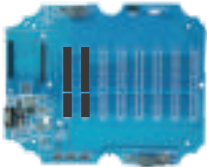
Transmitter Upper  
Body Color Options ■ ■ ■ ■ ■ Minimum order  
quantity applies.



# STONE

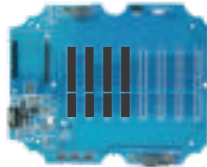
## Transmitter Spare Part List

Motherboard with 2 slots



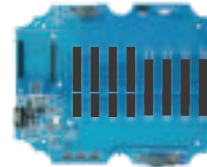
Product Name FLMBDZG01  
301800-0001

Motherboard with 4 slots



Product Name FLMBDZG02  
301800-0006

Motherboard with 8 slots



Product Name FLMBDZG03  
301800-0007

RF Module



Product Name STRFMDZG01  
991800-0007

Voltage Input Module



Product Name FLVLTZG01  
301800-0004

Voltage Output Module



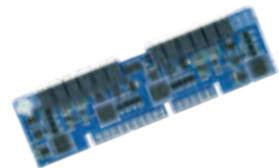
Product Name FLVLTZG02  
301800-0008

Voltage Input  
Output Module



Product Name FLVLTZG03  
301800-0009

Current Input Module



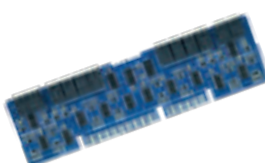
Product Name FLCRDZG01  
301800-0005

Current Output Module



Product Name FLCRDZG02  
301800-0010

Current Input  
Output Module



Product Name FLCRDZG03  
301800-0011

Digital Input Module  
Set of 8



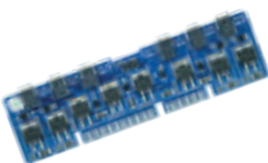
Product Name FLDINDZG01  
301800-0012

Digital Input Module  
Set of 16



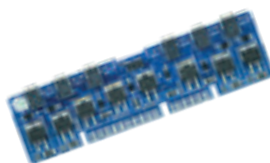
Product Name FLDINDZG02  
301800-0013

PWM Module (+) Set of 4



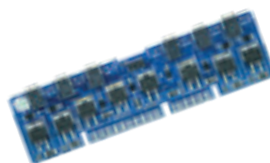
Product Name FLPWMDZG01  
301800-0003

PWM Module (-) Set of 4



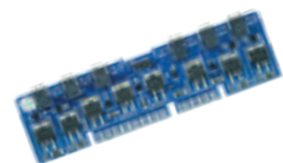
Product Name FLPWMDZG02  
301800-0014

PWM Module (+) Set of 8



Product Name FLPWMDZG03  
301800-0015

PWM Module (-) Set of 8



Product Name FLPWMDZG04  
301800-0016

Images are representative.



## STONE Transmitter Spare Part List

**Motherboard**



**Product Name** FLMCUDZG01  
991800-0006

**Receiver/Transmitter  
RF Module**



**Product Name** FLMCUDZG02  
991800-0009

**Relay Module  
Set of 4**



**Product Name** FLRLYDZG01  
301800-0017

**Relay Module  
Set of 8**



**Product Name** FLRLYDZG02  
301800-0018

**Startus Lexan**



**Product Name** FLDRMLKS01  
301700-0001

**Moduler Fixing Plate**



**Product Name** FLMSPO1  
301700-0002

**50x10x10 mm  
Vibration Wedges**



**Product Name** FLVBR01  
301700-0003

**Top Cover**



**Product Name** FLENUG01  
301500-0001

**Upper Body**



**Product Name** FLENAG01  
301500-0002



# PEBBLE & STONE

## Receiver - Transmitter

### — Joint Spare Parts Component List



Electronic Parts



Injection Parts



Labeling



Other Spare Parts

On-Off-On  
Permanent Toggle



Product Name 12TG102YS  
991400-0003

On-Off-Mom Toggle



Product Name 12TGX01KS  
991400-0001

Mom-Off-Mom Toggle



Product Name 12TG1021K2YS  
991400-0004

On-O Permanent Toggle



Product Name 12TG102KS  
991400-0005

On-Mom Spring Toggle



Product Name 12TGX01YS  
991400-0002

Toggle Sealing Bellows  
Selection Key



Product Name 12TGPNL01  
991400-0006

Locked Select Switch  
Toggle Sealing



Product Name 12TGPNL02  
991400-0008

Toggle Sealing Gasket



Product Name 16BTNANH01  
991400-0027

Single Axis 4  
Stage joystick



Product Name STPB0401  
991600-0001

Double Axis 4  
Stage joystick



Product Name STPB0402  
991600-0002

Single Axis  
Stepless joystick



Product Name STPB0101  
991600-0003

Double Axis  
Stepless joystick



Product Name STPB0102  
991600-0004

Single Axis  
Finger joystick



Product Name STPBFNG01  
991600-0005

19 mm Push Button



Product Name 19PBX01YS  
991400-0007

Selection Switch



Product Name 08RT10201  
991400-0014

10K Potentiometer



Product Name 10PT10301  
991400-0015

Images are representative.



## PEBBLE & STONE

### Receiver - Transmitter Joint Spare Parts

**RGB LED Indicator**


**Product Name** 08LDRGY01  
991400-0009

**Wired Use Connector Male**


**Product Name** STCNCSR01  
991400-0016

**Wired Use Connector Female**


**Product Name** STCNCSR02  
991400-0017

**Antenna Connection**


**Product Name** ARANTK01  
991400-0025

**Receiver / Transmitter External Antenna 90°**


**Product Name** ARANT02  
991400-0023

**Receiver / Transmitter External Antenna 180°**


**Product Name** ARANT04  
991400-0026

**Antenna Connection Cable**


**Product Name** ARANT05  
991400-0068

**Antenna Connection Cable**


**Product Name** ARANT01  
991400-0019

**Long Range External Antenna**


**Product Name** ARANT03  
991400-0024

**Waist Belt**


**Product Name** STKMRL01  
101700-0005

**Shoulder Belt**


**Product Name** STKMROM01  
101700-0003

**Shoulder & Waist Belt**


**Product Name** STKMROM02  
101700-0004

**M3x6 Card Connection**


**Product Name** ARRL01209  
991400-0051

**M3X10 Card Connection**


**Product Name** ARRL01210  
991400-0052

**M3x4 Card Connection**


**Product Name** ARRL0121  
991400-0053

**PG 13.5 Plastic Union**


**Product Name** ARPG1301  
991400-0055

Images are representative.



# PEBBLE & STONE

## Receiver - Transmitter Joint Spare Parts

PG 16 Plastic Record



**Product Name** ARPG1601  
991400-0031

PG 21 Plastic Record



**Product Name** ARPG2101  
991400-0056

42 Contact Socket Core



**Product Name** ARCKMP42  
991400-0058

42 Contact Plug Core



**Product Name** ARCKSF42  
991400-0060

Female Pin



**Product Name** ARCKMP01  
991400-0059

Male Pin



**Product Name** ARCKP02  
991400-0061

42 Contact Plug Body



**Product Name** ARCKFG42  
991400-0062

42 Contact Socket Body



**Product Name** ARCKPG42  
991400-0063

24 Contact Mobile Plug



**Product Name** ARCKSF24  
991400-0037

4 Contact Machine Socket



**Product Name** ARCKMP24  
991400-0038

32 Contact Mobile Plug



**Product Name** ARCKSF32  
991400-0040

32 Contact Machine Socket



**Product Name** ARCKMP32  
991400-0039

12V DC Relay



**Product Name** ARRL01201  
991400-0043

2 Pin 90° Connector



**Product Name** GRPSCN0202  
991400-0074

2-pin 180° Connector



**Product Name** GRPSCN0201  
991400-0041

Triple 180° Connector



**Product Name** GRPSCN0301  
991400-0042



## PEBBLE & STONE

### Receiver - Transmitter Joint Spare Parts

**1A Glass Fuse**


**Product Name** ARCSG01  
991400-0028

**8A Glass Fuse**


**Product Name** ARCSG02  
991400-0029

**Glass Fuse Holder**


**Product Name** ARCSGY01  
991400-0030

**Connecting Screw M8x100**


**Product Name** PMBKDZG02  
501800-0002

**M3x10 Female/Female Upgrade Part**


**Product Name** ARRL01210  
991400-0052

**M4x10 Female/Female Upgrade Part**


**Product Name** ARRL01212  
991400-0054

**M4x16 Body Connection**


**Product Name** ARRL01208  
991400-0052

**M3x6 Female/Female Extension Piece**


**Product Name** ARRL01209  
991400-0051

**32x0.75 Connection Cable/1m**


**Product Name** ARKBL32  
991400-0066

**36x0.75 Connection Cable/1m**


**Product Name** ARKBL36  
991400-0067

**16x0.75 Connection Cable/1m**


**Product Name** ARKBL16  
991400-0064

**24x0.75 Connection Cable/1m**


**Product Name** ARKBL24  
991400-0065

**Small Emergency Stop**


**Product Name** 16LDEMC01  
991400-0018

**Big Emergency Stop**


**Product Name** PBPNLRZP  
STPBEMC01



# Charging Unit

## Spare Part List

Battery Charger Circuit



**Product Name** STPBCHRDZG01  
991800-0002

Battery Charger



**Product Name** STPBCHR01  
991700-0002

Charging Unit Lower Body



**Product Name** STPBCHRAG  
991700-0007

Charger Upper Body



**Product Name** STPBCHRUG  
991700-0004

Battery



**Product Name** STPBBAT102001  
991700-0001

Charging Adapter



**Product Name** STPBAD01  
991700-0005

Charging Cable



**Product Name** STPBADK01  
991700-0006

Pogo Pin

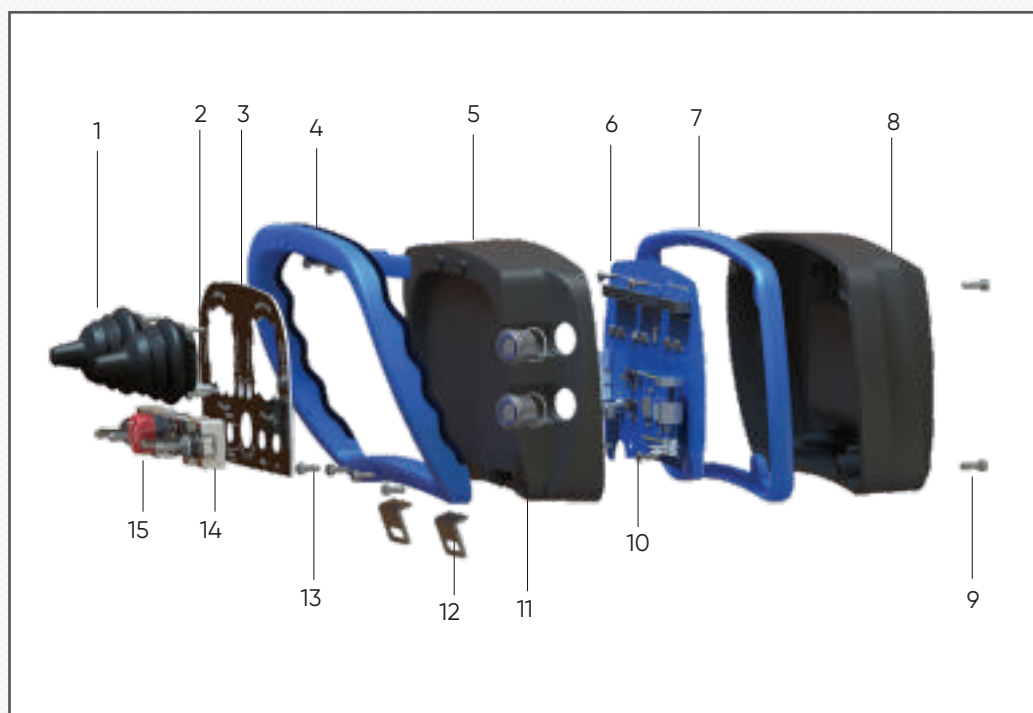


**Product Name** STNPG01  
991700-0003



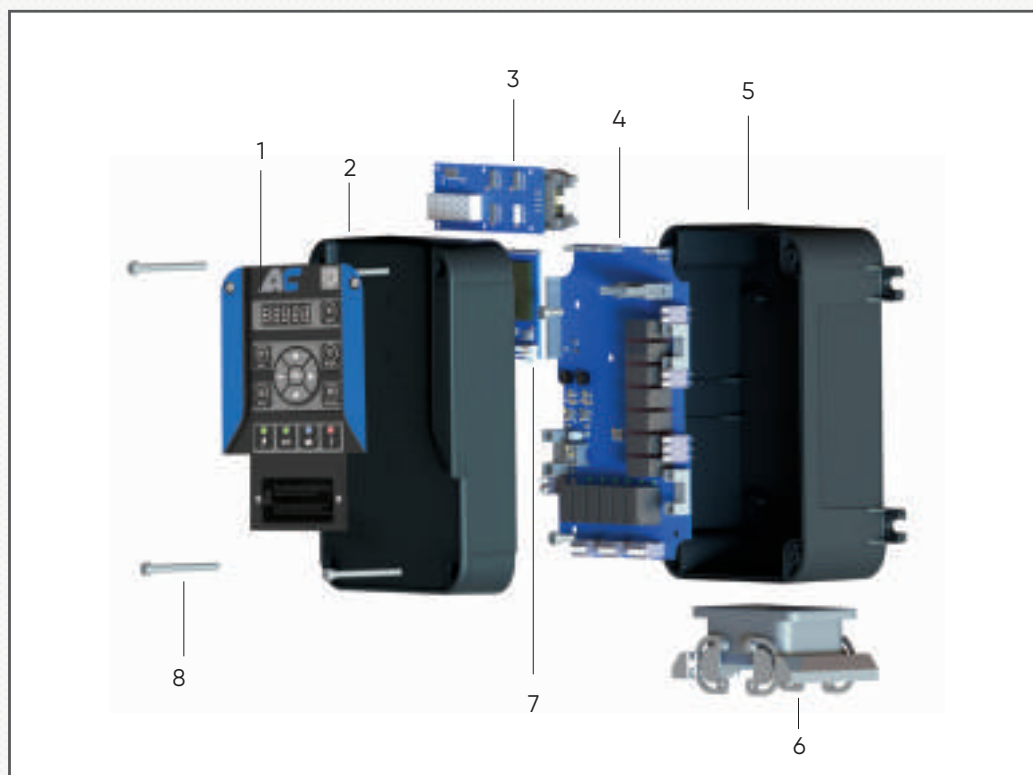
# PEBBLE

## Transmitter



- 1 - Joystick
- 2 - RGB LED
- 3 - Resopal Panel
- 4 - Handle
- 5 - Upper Body
- 6 - Transmitter Motherboard
- 7 - Seal
- 8 - Lower Body
- 9 - Connector
- 10- RF Module
- 11 - Push Button
- 12 - Buckle
- 13 - Connector
- 14 - Toggle
- 15-Emergency Stop

## Receiver

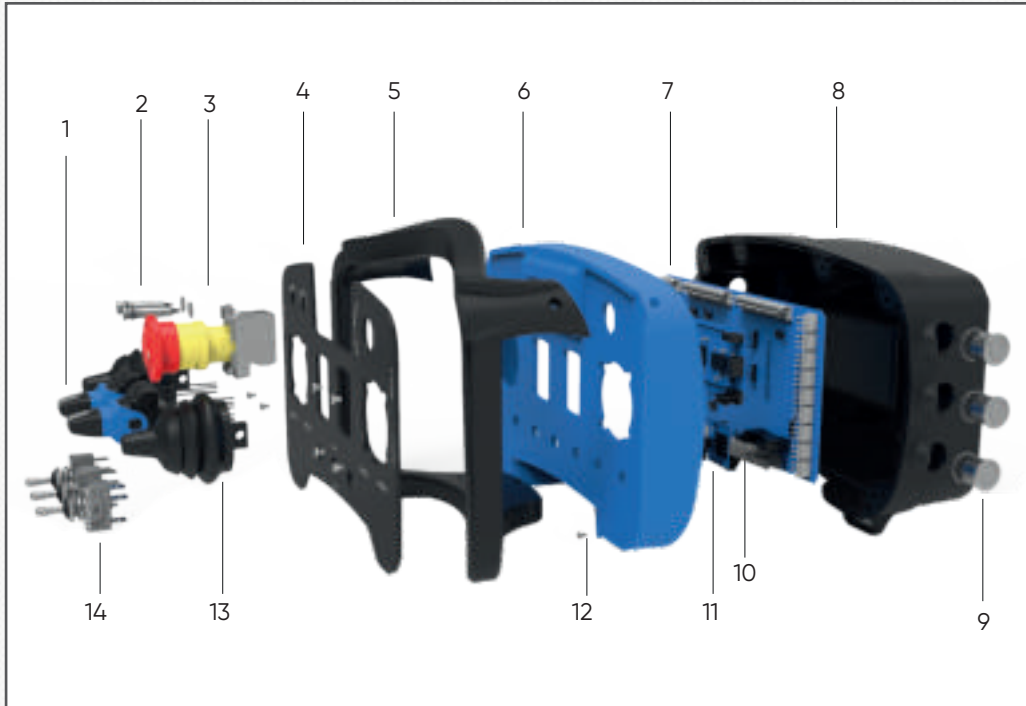


- 1 - Status Lexan
- 2 - Top Cover
- 3 - LCD Screen
- 4 - Receiver Motherboard
- 5 - Lower Body
- 6 - Multi-Contact Socket
- 7 - Processor Module
- 8 - Connector



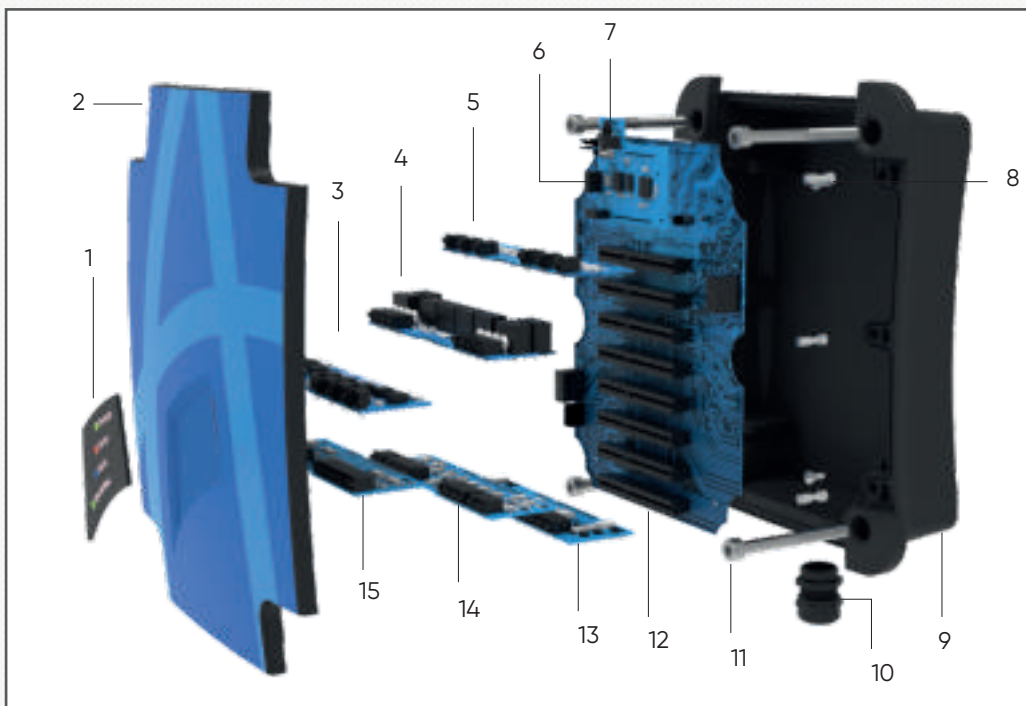
# STONE

## Transmitter



- 1 - Finger Joystick
- 2 - RGB LED
- 3 - Emergency Stop
- A - Resopal Panel 5 - Handle
- 6 - Upper Body
- 7 - Transmitter Motherboard
- 8 - Lower Body
- 9 - Push Button
- 10 - RF Module
- 11 - Processor Board
- 12 - Connector
- 13 - Joystick
- 14 - Toggle

## Receiver



- 1 - Status Lexan
- 2 - Top Cover
- 3 - PWM Module
- 4 - Relay Module
- 5 - Voltage Module
- 6 - RF Module
- 7 - Processor Module
- 8 - Connector
- 9 - Lower Body
- 10 - Union
- 11 - Mounting Screw
- 12 - Receiver Motherboard
- 13 - Current Module
- 14 - Digital Input Module
- 15 - Digital Output Module



**ARLENTUS  
CONTROL**



Merkez: ODTÜ TEKNOKENT Ostim Merkezi Uzay Çağı Cad.  
1308.Sk. No: 6/ZK-14 06374 Yenimahalle - ANKARA / TÜRKİYE



Fabrika: Başkent OSB Başkent Bulvarı No:39 06939  
Temelli- Sincan - ANKARA / TÜRKİYE



+90 312 394 08 69 (pbx)



+90 312 394 08 89



[info@arlentus.com](mailto:info@arlentus.com)



[arlentus.com](http://arlentus.com)